



Figure 1

Turbine-generator group at Powerhouse

TURBINE MTF/SKAT T-13/100

Specifications

Type: Cross-flow ('Banki')
 Gross head: 48 m
 Design flow: 147 l/s
 Penstock diameter: 355 m
 Penstock length: 285 m
 Penstock material: PVC C.4
 Power: 36 kW

Made by: MTF - Chile
 Year built: 1998

MHP Project

INTE LTDA.

Construction

Rio Cisnes Farm

Location

Rio Cisnes Farm
 Alto Río Cisnes
 Región de Aysén - CHILE



Figura 2

Mapa ubicación

Location map (See www.turistel.cl, Road map 'J')

MHP "EL CHENKE"

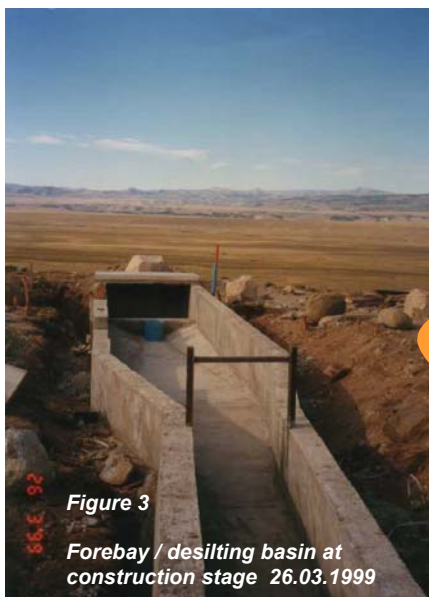


Figure 3

Forebay / desilting basin at construction stage 26.03.1999

36 kW

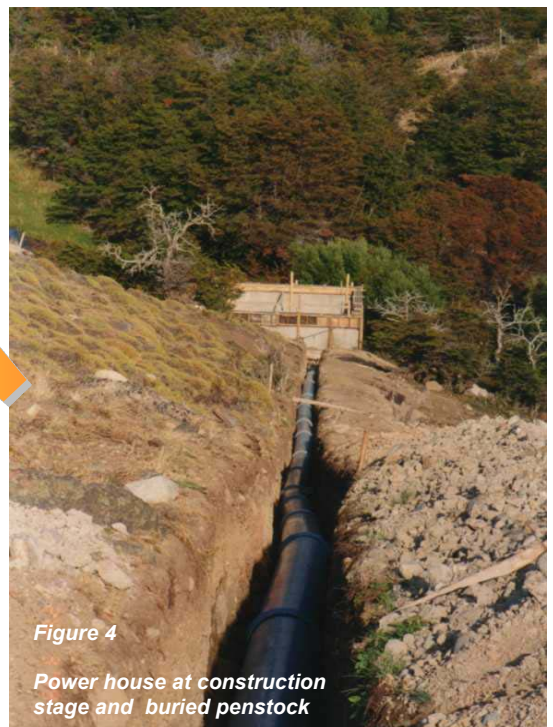


Figure 4

Power house at construction stage and buried penstock

A TC Group "Technologies for your Comfort" enterprise